

# KAYAR

Premium Rubber Flooring





# KAYAR

Smooth rubber surface with natural coconut husk fibers.

**THICKNESS**  
 0.118 in  
 (3 mm)

**WEIGHT**  
 ~1.00 lb/ft<sup>2</sup>  
 (~4.9 kg/m<sup>2</sup>)

**ROLLS**  
 6 ft 2 in x 32 ft 9 in  
 (1.9 m x 10 m)

**TILES**  
 24 in x 24 in  
 (61 cm x 61 cm)

## WITH DUAL DUROMETER TECHNOLOGY

MONDO's unique Dual Durometer Technology is a process through which a wear layer is molecularly bound to a bottom performance layer. It increases the durability and performance of the flooring and allows for a long-lasting appearance.

## DURABILITY

UV cured MONDOshield maintenance mitigation system  
 Proven wear abrasion resistance - ASTM D3389  
 High stain and chemical resistance - ASTM F925  
 Great static and rolling load resistance  
 15-year wear warranty

## COMFORT

Noise absorption qualities for improved acoustics - ISO 10140-3  
 Impact Sound Transmission Reduction - ASTM E2179  
 Increased underfoot comfort with anti-fatigue properties  
 Superior product resiliency

## LIFE-CYCLE COST/EASE OF MAINTENANCE

Low overall cost of ownership from savings on maintenance  
 Demonstrated long life expectancy  
 No waxing required

## SAFETY

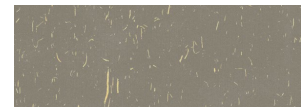
Excellent fungal, bacterial and microbial resistance throughout  
 Slip resistance - complies with ADA 302 Floor and ground surfaces  
 Class 1 fire rated - ASTM E648  
 Resistance to Fungi - ASTM G21

## ENVIRONMENTAL STEWARDSHIP

EPD and HPD  
 100% recyclable  
 Does not contain any LBC red listed ingredient  
 GREENGUARD Gold certified  
 Meets CA section 01350  
 10% pre-consumer recycled content  
 4% rapidly renewable content  
 Cradle to Cradle Certified® Silver



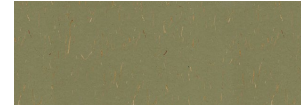
K104 Lacey Pearl



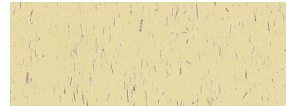
K054 Dune Grass



K073 Clean Canvas



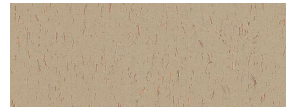
K038 Thyme



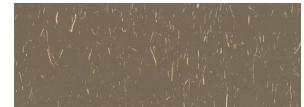
K052 Natural Light



K058 Soft Toffee



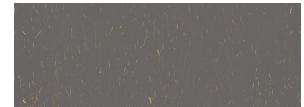
K027 Camel



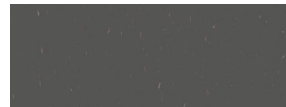
K048 Caffe Latte



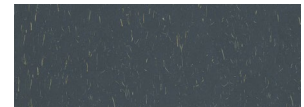
K049 Ozone



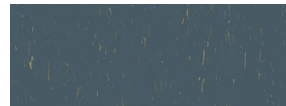
K103 Stardust



K017 Natural Gray



K021 Iron Mountain



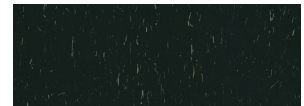
K064 Slate Teal



K062 Night Sky



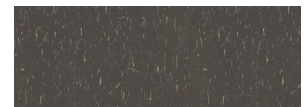
K072 Lime Tree



K061 Dark Ivy



K071 Exotic Blossom



K039 Wild Truffle



K074 Spicy Salsa



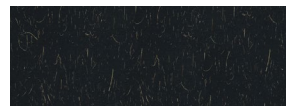
K063 Vintage Velvet



K070 Flamingo



K102 Cherry Carbon



K001 Graphic Charcoal



K000 Onyx

Specs



Sustainability Credential