

# LAVA

Premium Rubber Flooring





# LAVA

Stone-embossed rubber surface with glossy speckles.



## THICKNESS

0.118 in  
(3 mm)



## ROLLS

6 ft 2 in x 32 ft 9 in  
(1.9 m x 10 m)



## WEIGHT

~0.96 lb/ft<sup>2</sup>  
(~4.7 kg/m<sup>2</sup>)



## TILES

24 in x 24 in  
(61 cm x 61 cm)

## WITH DUAL DUROMETER TECHNOLOGY

MONDO's unique Dual Durometer Technology is a process through which a wear layer is molecularly bound to a bottom performance layer. It increases the durability and performance of the flooring and allows for a long-lasting appearance.

## DURABILITY

Proven wear abrasion resistance - ASTM D3389  
High stain and chemical resistance - ASTM F925  
Great static and rolling load resistance  
15-year wear warranty

## COMFORT

Noise absorption qualities for improved acoustics - ASTM E2179  
Increased underfoot comfort with anti-fatigue properties  
Superior product resiliency

## LIFE-CYCLE COST/EASE OF MAINTENANCE

Low overall cost of ownership from savings on maintenance  
Demonstrated long life expectancy  
No waxing required

## SAFETY

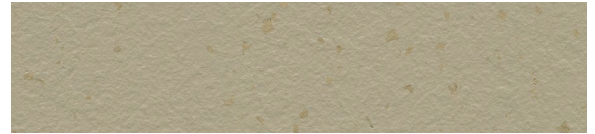
Excellent fungal, bacterial and microbial resistance throughout  
Slip resistance - complies with ADA 302 Floor and ground surfaces  
Class 1 fire rated - ASTM E648  
Resistance to Fungi - ASTM G21

## ENVIRONMENTAL STEWARDSHIP

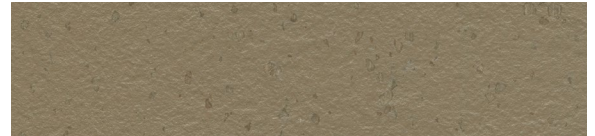
HPD  
100% recyclable  
Does not contain any LBC red listed ingredient  
GREENGUARD Gold certified  
Meets CA section 01350  
Cradle to Cradle Certified® Silver



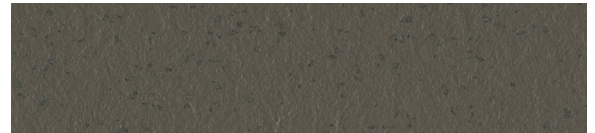
L15 Hekla



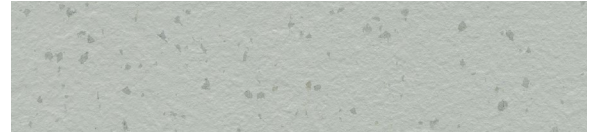
L19 Kronotsky



L03 Vesuvio



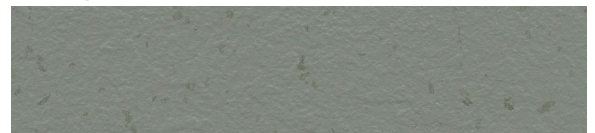
L02 Teide



L16 Erebus



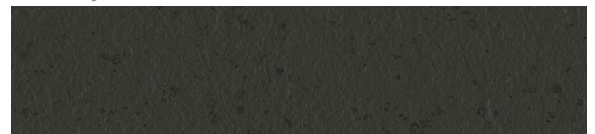
L17 Sajama



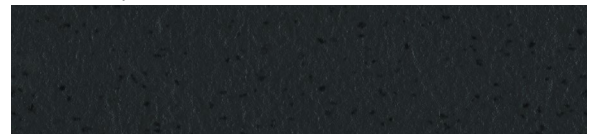
L18 Meru



L06 Fuji



L01 Merapi



L05 Etna

Specs

Sustainability credentials

