

DHARMA

Premium Contract Rubber Flooring



 **MONDO**

DHARMA

Smooth rubber surface with micro-granules.



THICKNESS
0.079 in
[2 mm]



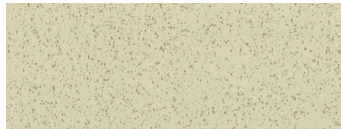
WEIGHT
~0.63 lb/ft²
[~3.1 kg/m²]



ROLLS
6 ft 2 in x 45 ft 11 in
[1.9 m x 14 m]



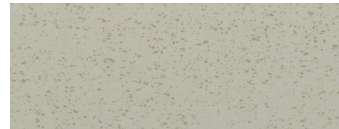
TILES
24 in x 24 in
[61 cm x 61 cm]



D12 Vanilla



D17 Cedar



D02 Linen



D07 Palladium



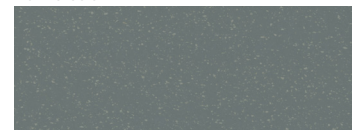
D16 Spice



D10 Moon



D14 Juta



D09 Ash



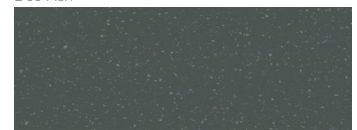
D18 Saffron



D08 Air



D11 Musk



D04 Elephant



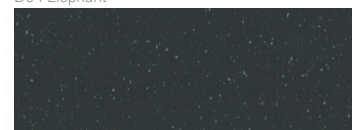
D20 Papaya



D06 Island



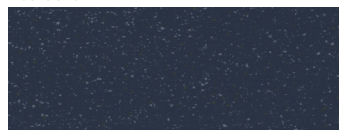
D15 Almond



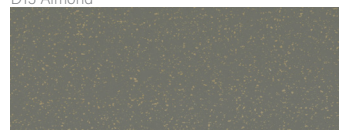
D03 Seal



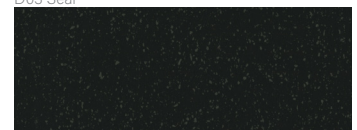
D19 Pompei



D05 Midnight



D13 Oak



D01 Onyx

DURABILITY

- UV-cured Mondoshield surface treatment
- Tested for Abrasion Resistance (ASTM D3389) above industry requirements
- Exceptional chemical resistance - ASTM F925
- Great static and rolling load resistance
- 15-year standard limited wear warranty

SAFETY

- Excellent Microbial Resistance
- Uniform nonporous construction
- Great slip resistance - ASTM D2047
- Class 1 fire rated - ASTM E648

REDUCED TOTAL COST OF OWNERSHIP (TCO)

- Demonstrated long life expectancy
- No surface waxing required
- Easy to maintain with neutral floor cleaner

COMFORT

- Noise absorption qualities for improved acoustics
- Impact Sound Transmission Reduction - ASTM E2179
- Increased underfoot comfort with anti-fatigue properties
- Superior product resiliency

ENVIRONMENTAL STEWARDSHIP

- Product-Specific Type III EPD
- Health Product Declaration (HPD)
- 100% recyclable
- Made without LBC red listed ingredients
- GREENGUARD Gold certified
- Pre-consumer recycled content
- Cradle to Cradle Certified® Silver

Website



Sustainability Credentials